

Indico 100®

GENERATOR PERFORMANCE MATRIX (VZW2930 Series)

Product Name	Indico100® (32 kW)²*	Indico 100® (40 kW)²*	Indico 100® (50 kW)	Indico 100® (65 kW)	Indico 100® (80 kW)	Indico 100® (100 kW)
Application	Radiographic	Radiographic or RF	Radiographic or RF	Radiographic or RF	Radiographic or RF	Radiographic or RF
Generator Type	High Frequency Output up to 400 kHz	High Frequency Output up to 400 kHz	High Frequency Output up to 400 kHz	High Frequency Output up to 400 kHz	High Frequency Output up to 400 kHz	High Frequency Output up to 400 kHz
kV (Radiographic)	40 - 150 kV	40 - 150 kV	40 - 150 kV	40 - 150 kV	40 - 150 kV	40 - 150 kV
kV (Fluoroscopic)¹	N/A	40 - 125 kV	40 - 125 kV	40 - 125 kV	40 - 125 kV	40 - 125 kV
mA Range RAD	10-400 mA	10-500 mA	10-630 mA	10-800 mA	10-1000 mA	10-1000 mA
mA Range FLUORO	N/A	0.5-10 mA continuous	0.5-10 mA continuous	0.5-10 mA continuous	0.5-10 mA continuous	0.5-10 mA continuous
Rotor Supply	Low Speed Standard	Low Speed Standard	Low Speed Standard	Low Speed Standard	Low Speed Standard	Low Speed Standard
Line Nominal/Phase²	1 Phase, 230 VAC, 3 Phase 400 or 480 VAC ²	1 Phase, 230 VAC, 3 Phase 400 or 480 VAC ²	3 Phase 400 or 480 VAC	3 Phase 400 or 480 VAC	3 Phase 400 or 480 VAC	3 Phase 400 or 480 VAC
Line Voltage Range	± 10 %	± 10 %	± 10 %	± 10 %	± 10 %	± 10 %
High Voltage Ripple (typ.)	<1 kV @ 100 kV	<1 kV @ 100 kV	<1 kV @ 100 kV	<1 kV @ 100 kV	<1 kV @ 100 kV	<1 kV @ 100 kV
Number of X-Ray Tubes	1 Tube Capability	1 Tube Capability	1 Tube Capability	1 Tube Capability	1 Tube Capability	1 Tube Capability
Timer Range (Seconds Programmable) *	*	*	*	*	*	*
Anatomical Programs RAD	768 techniques	768 techniques	768 techniques	768 techniques	768 techniques	768 techniques
Anatomical Programs RF	N/A	1024 techniques	1024 techniques	1024 techniques	1024 techniques	1024 techniques
Anatomical Programs Touchscreen	20,000+ techniques	20,000+ techniques	20,000+ techniques	20,000+ techniques	20,000+ techniques	20,000+ techniques
mAs Range Non AEC³*	0.1 – 630 mAs	0.1 – 630 mAs	0.1 – 1000 mAs	0.1 – 1000 mAs	0.1 – 1000 mAs	0.1 – 1000 mAs
Number of Image Receptors	6	6	6	6	6	6
Technique Selection	1. kV with AEC option 2. kV/mAs 3. kV/mA/Time	1. kV with AEC option 2. kV/mAs 3. kV/mA/Time	1. kV with AEC option 2. kV/mAs 3. kV/mA/Time	1. kV with AEC option 2. kV/mAs 3. kV/mA/Time	1. kV with AEC option 2. kV/mAs 3. kV/mA/Time	1. kV with AEC option 2. kV/mAs 3. kV/mA/Time
GenWare™ Service Software*	Yes	Yes	Yes	Yes	Yes	Yes
Documentation	CD manual hard copy optional	CD manual hard copy optional	CD manual hard copy optional	CD manual hard copy optional	CD manual hard copy optional	CD manual hard copy optional
OPTIONS						
Touchscreen Console	Yes	Yes	Yes	Yes	Yes	Yes
Touchscreen Wall Mount	Yes	Yes	Yes	Yes	Yes	Yes
Standard Console Pedestal	Yes	Yes	Yes	Yes	Yes	Yes
Standard Console Wall Mount	Yes	Yes	Yes	Yes	Yes	Yes
Dual Speed Starter	Yes	Yes	Yes	Yes	Yes	Yes
Second Tube Capability	*	Yes	Yes	Yes	Yes	Yes
AEC Interface	Ionization, PMT, or Solid State	Ionization, PMT, or Solid State	Ionization, PMT, or Solid State	Ionization, PMT, or Solid State	Ionization, PMT, or Solid State	Ionization, PMT, or Solid State
ABS Interface	N/A	PMT, Photo Diode, Video or Proportional DC	PMT, Photo Diode, Video or Proportional DC	PMT, Photo Diode, Video or Proportional DC	PMT, Photo Diode, Video or Proportional DC	PMT, Photo Diode, Video or Proportional DC
High Level Continuous Fluoroscopy	N/A	up to 20 mA	up to 20 mA	up to 20 mA	up to 20 mA	up to 20 mA
Pulsed Fluoroscopy *	N/A	up to 40 mA	up to 40 mA	up to 40 mA	up to 40 mA	up to 40 mA
High Level Pulsed Fluoroscopy*	N/A	up to 80 mA	up to 80 mA	up to 80 mA	up to 80 mA	up to 80 mA
kV/mAs Stepping*	N/A	Yes	Yes	Yes	Yes	Yes
DR/CR/R/F Digital Imaging Interfaces*	Yes*	Yes	Yes	Yes	Yes	Yes
Cine*	N/A	N/A	N/A	N/A	N/A	Yes
Falling Load*	Yes	Yes	Yes	Yes	Yes	Yes
Dose Area Product (DAP) Interface*	Yes	Yes	Yes	Yes	Yes	Yes
Air Kerma Readout	N/A	Yes	Yes	Yes	Yes	Yes
Remote Fluoro Control	N/A	Yes	Yes	Yes	Yes	Yes
Exposure Hand Switch	Yes	Yes	Yes	Yes	Yes	Yes
Custom Interfaces *	Yes	Yes	Yes	Yes	Yes	Yes
Cabinet Wiring Cover *	Yes	Yes	Yes	Yes	Yes	Yes
Auxiliary Room Power*	Yes	Yes	Yes	Yes	Yes	Yes
3 Phase, 208 or 240 VAC ⁴ with Line Adjusting Transformer*	Yes	Yes	Yes	N/A	N/A	N/A
Second Filament Drive	*	Yes	Yes	Yes	Yes	Yes

* Consult factory for details.

1. Max. fluoroscopic kV is 125 kV - programmable to 110 kV for European requirements.

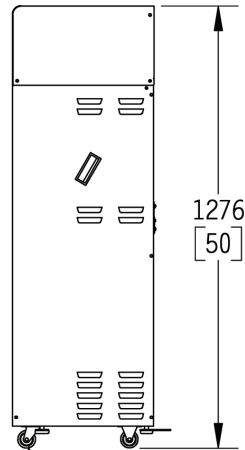
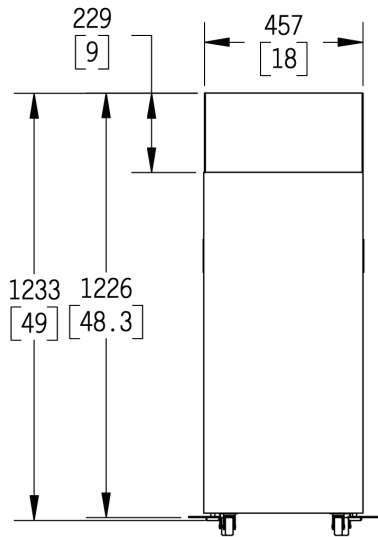
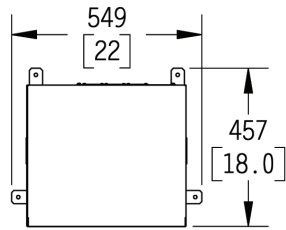
2. Some models may require additional line transformers. Other voltages are available.
Consult factory for details.

3. The mAs limit may be de-rated by software.

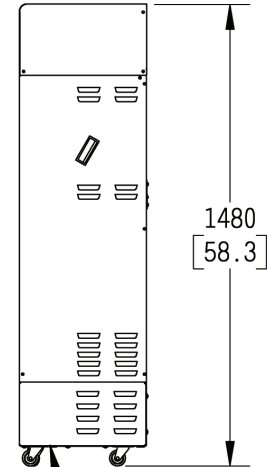
4. For other lines, phases and voltages, consult factory.
Specifications are subject to change without notice.



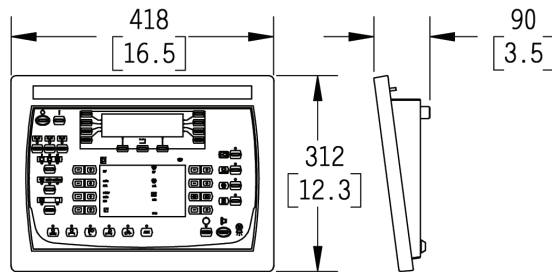
Indico 100[®]



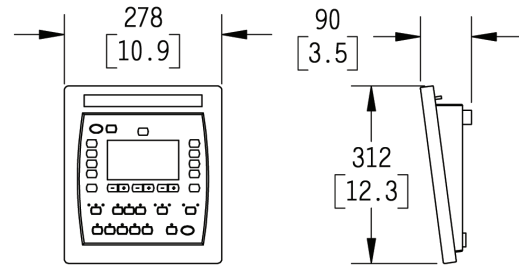
Wheels (Optional)



Auxiliary Cabinet (Optional)



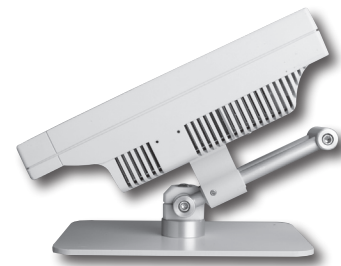
Indico 100[®] RF Console



Indico 100[®] RAD Console



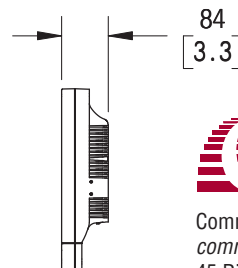
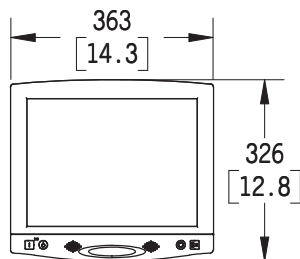
CPI Touchscreen Console (Optional)



Desktop Base (Optional)



Wall Mount (Optional)



All dimensions are in mm [inches]



Communications & Power Industries Canada Inc.
 communications & medical products division
 45 River Drive / Georgetown, Ontario / Canada L7G 2J4
 Hot Line Telephone: 1-888-CPI-XRAY
 TEL: 905-877-0161 / FAX: 905-877-5327
 E-MAIL: marketing@cmp.cpii.com
 www.cpii.com

